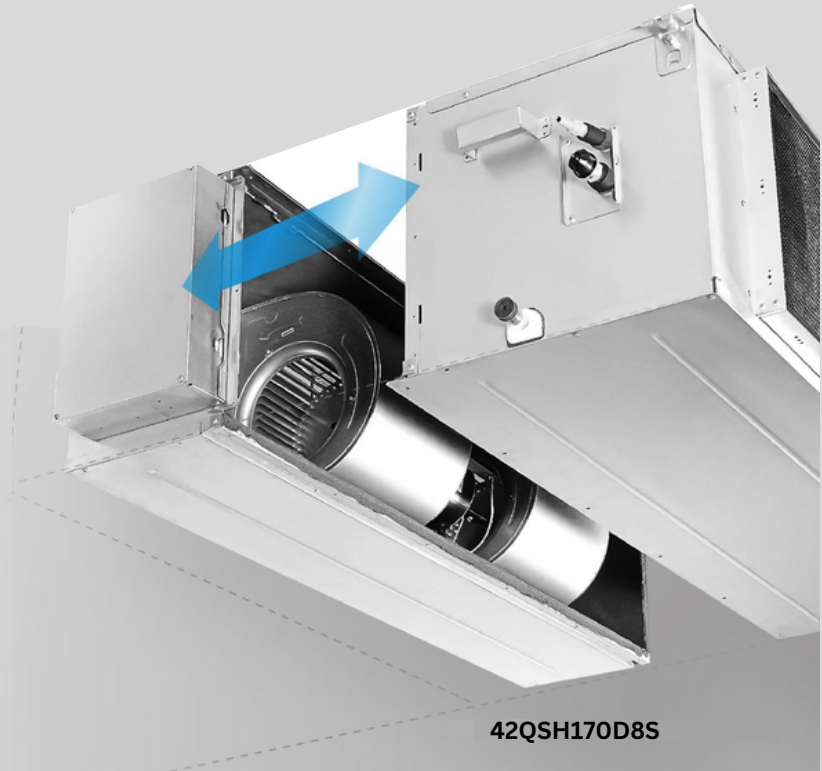
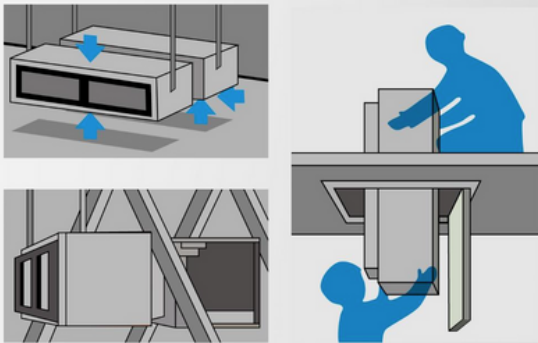




## Introducing the New Carrier Splittable Duct system

### Split Design HSP Duct Indoor Unit

The HSP duct indoor unit can be easily separated into coil & fan parts, and reassembled within the ceiling for installation.



42QSH170D8S

### Easy to Install

With the splittable design, the fan part and the coil part can be carried into or out of the ceiling for installation or maintenance, making ease of renovation or retrofit installation or service.



# Optimized Outdoor Unit

## Safer Design:

Bigger space between E-box and compressor tubes, much safer and durable.

## Easier Installation:

Installers can stand straight instead of squatting or bending over to do the wiring



## Easier Wire Connection:

Easier access to connection ports  
CN5 for debug tool

**5**  
**YEAR**  
**WARRANTY**  
INCLUDES PARTS AND LABOUR.

Model Name	Operating Capacity Range [kW]		Rated EER / COP	Dimensions H x W x D [mm]	Pipe Sizes [mm]	Maximum Pipe [m]			Max. Operating Current [A]
	Cooling	Heating			Liquid / Gas	Length	Height	Pre-charge	
42QSH170D8S Indoor	16.2 [3.52-20.8]	17.0 [2.9-21.1]	3.29 / 3.91	440 x 1400 x 858	9.52 / 15.88	75	30	15	31.0
38QSH170D8S Outdoor				1333 x 952 x 415					

For more details on carrier ducted systems, visit [carrierair.com.au](http://carrierair.com.au)



**DURABLE R32  
GMCC COMPRESSOR**



**HIGH STATIC PRESSURE  
Eccentric Fan Design**



**DUAL CONTROL**



**I-CLEAN  
ACTIVE CLEAN**



**ECO ENERGY SAVING**



**EASY MAINTENANCE**



**LONG DUCT  
CONNECTION**



**ADJUSTABLE STATIC  
PRESSURE SYSTEM**



**EASY INSTALL**



**FLEXIBLE  
INSTALLTION**

